

SCOTHERN NEWS



DECEMBER 2025

# What's in Decembers News

Page	
3	Welcome
4	Grange Park
5	Speed Awareness information
6	Scothern village December events
7	St Germain's Church - Christmas Fair photos
8	Digital Handyman
9	Welton PDA
10	Let there be light by Rev Lynne Hawkins
12	Church Services in the Benefice
13	Crossword
14	Lindsey u3a Welton
16	Food Waste Collection 2026 information
18	December in Scothern Chapel
19	A Meaningful Christmas by Rev Richard
20	Welton Library & Community Hub
21	Lincolnshire Mobile Library
23	Information on the West Thorne Grange Development
24	Armed Forces Community Directory
26	Scothern Parish Council News
27	Planning Applications
28	Church St one-way suggestion (your views required)
29	How to Report Flooding
30	Local Contacts
31	Useful Information
34	Bus Timetable
35	Diary of Events in December
Back cover	Remembrance Day 2025 photos

# Welcome

We are now into the last month of the year. A busy month where the days are shortened due to darker mornings and nights but there is much excitement over the many festivities of Christmas and New Year period. This months magazine includes details of lots of festive events to enjoy around the villiage and don't forget anyone can now use the noticeboard on Dunholme Road to advertise events.

However you celebrate this time of year we wish you a very healthy and happy one.



## Help Wanted

We are still looking for any willing volunteers to join our editorial team, if you could give us a few hours of your time each month we would love to hear from you. Please e-mail

**[scothern.news@gmail.com](mailto:scothern.news@gmail.com)** or alternatively ring the Parish Council Clerk on **07549 137538**.

Thank you those residents who help deliver the booklet across Scothern and we are always looking for further volunteers, please contact us if you can help.

\*\*\*\*\*

*Scothern News is an informal newsletter for the interest of its residents. It is produced and funded by the Parish Council it does not represent "official" council views or opinions. Formal Council minutes can be found on the Council website:*

***[scothern.parish.lincolnshire.gov.uk](http://scothern.parish.lincolnshire.gov.uk)***

## Grange Park

Thankfully the Grange Park group met in the morning of 10th November as by lunchtime torrential rain had set in. Winter really does seem to be arriving as the last of the leaves fall off the trees and the final cut of the grass is done. It might seem that there is not a lot going on at this time of year, but things need to be done throughout the year.

The first half of the Yellow Rattle was sown. This is a parasitic plant that saps the strength from nearby grasses by tapping into their roots so hopefully making room for wildflowers to grow. It is fussy and the seeds need to be sown onto bare earth so the cut grass had to be raked off to expose the earth. This was heaped up in the middle wild area and will rot down over the nettles. Hopefully it will also provide habitat for hedgehogs. It might look like someone has been dumping garden rubbish, but it was done on purpose. Although we would rather Grange Park was not used as a tip for other garden prunings. Just saying...



The Yellow Rattle will hopefully flower in the summer and produce more seeds for us. The pods are brown and when they dry out in the sun the seeds rattle in them hence the name

Two trees have been felled as both died because of the prolonged flooding. One is to be replaced with a variety that is water tolerant.

Now that Lindum Homes have started the development off Nettleham Road Grange Park feels much more open and makes us really appreciate our little patch of Green Space in Scothern.



## Speed Awareness in Scothern

The regular speed data taken from the three speed indication devices (SIDs) located in Scothern, and included in Scothern News is welcomed by residents. However there has been queries raised regarding the location of the cameras and the data reported. The following information is given by the Parish Council to support the data provided.

The location of the cameras on Dunholme Road, Sudbrooke Road and Main Street was determined by Lincolnshire Road Safety Partnership (LRSP). This organisation is made up of :

- Lincolnshire County Council
- Lincolnshire Police
- Police and Crime Commissioner for Lincolnshire
- National Highways
- Lincolnshire Fire and Rescue
- East Midlands Ambulance Service

LRSP specify where the SIDs should be located and this has to be adhered to.

The speed device first registers the oncoming vehicle approximately 50 meters from the sign, it takes three measurements and the recorded speed shown in the data is an average of the three speeds. All vehicles are recorded including motorcycles. The data recorded and reported is miles per hour. The data for October 2025 is shown below:

Speed Awareness Data October 2025											
Camera	Incoming Vehicles Total	Outgoing Vehicles Total	Incoming Vehicles less than 40 mph	Outgoing Vehicles less than 40 mph	No. of Incoming Vehicles over 50 mph	No. of Outgoing Vehicles Over 50 mph	No. of Incoming Vehicles over 70 mph	Outgoing Vehicles Over 70 mph	Maximum incoming Speed mph	Maximum Outgoing Speed mph	
Dunholme Road	63411	76753	99%	97%	37	143	1	8	73	81	
Sudbrooke Road	55524	40259	91%	97%	567	827	4	12	93	80	
Main Street	29101	32108	99%	99%	5	19	0	1	53	77	

Carols with the  
Cabra Singers

6th December

4pm (doors open 3.30pm)  
Scothern Village Hall

A festive music  
event with  
mulled wine and  
mince pies.

**TICKETS** Adult £8  
(Inc. mulled wine  
& mince pies)  
Child £4  
(Inc. soft drink  
& choc miniroll)

[www.scothernvillagehall.org](http://www.scothernvillagehall.org)



**SCOTHERN METHODIST  
CHAPEL**

**CAROLS AT CHRISTMAS**

**SUNDAY 14 DECEMBER**

**AT 3PM**

EVERYBODY WELCOME



Saturday  
6<sup>th</sup> Dec  
12 - 4pm

THE  
BOTTLE  
& GLASS  
COUNTRY PUB & KITCHEN

**Scothern  
Christmas Market**  
at The Bottle & Glass

Join us for locally produced festive crafts,  
gifts, food, drink and lots more!





**CAROLS**

**in the Car Park**

**17th December 7pm**

*Open air, community Carol singing  
under the stars!*

Led by Andrew Cullum  
Music by George Carty & Gerry Wiswould

**FREE EVENT : REFRESHMENTS AVAILABLE**

**SCOTHERN VILLAGE HALL CAR PARK**  
(inside if wet)

# St. Germain's Church Christmas Fair

## 15th November 2025



# DIGITAL HANDYMAN

## LINCOLN

Digital Marketing, IT and Technical Support  
for Home and Small Businesses

- Digital Marketing
- Graphic Design
- Selling Online
- Device Tech Support
- Website Design
- General Maintenance

Find out more at  
[www.DigitalHandymanLincoln.co.uk](http://www.DigitalHandymanLincoln.co.uk)



## Penguin DISCOS

Scothern based Mobile Disco,  
DJ, Sound & Lighting Hire

We provide professional DJ services,  
along with equipment only hire for  
parties, weddings, corporate functions  
and many other events.

Get a free instant price online at  
[www.PenguinDiscos.co.uk](http://www.PenguinDiscos.co.uk)





## WELTON PDA

The Autumn Fayre held on Sat 25<sup>th</sup> October was, once again, a great success. The total raised after deduction of expenses, hall hire etc, was £1019.80. Huge thanks to those who helped on day, those who donated items to the various stalls and games and to everyone who came along to support us.

WE NOW HAVE A CARD READER so 'no cash is no excuse at our events!!!' You can now pay by card or phone.

NOTE volunteer drivers do not carry card machines. To avoid embarrassment, please have some cash with you to pay your driver.

The PDA AGM was held on Thursday 6<sup>th</sup> November and I am pleased to report that we now have 3 new committee members, 1 to assist with transport booking and 2 to help out with catering and fund raising plus another lady who is happy to help when she isn't working. This is excellent news as I am a firm believer in the saying 'many hands make light work'

My usual appeal for cakes still stands and our next event will be the Christmas lunch on 5<sup>th</sup> December. Any cakes offered can be collected or delivered on the day to Welton village hall from 9am. All 100 tickets quickly sold out ( I actually sold 101) There will be the usual cake stall and raffle. The children from St Marys School will be entertaining us prior to the meal being served.

A reminder to those who have tickets, please arrive to be seated (leaving time to buy raffle tickets and cakes) by 11.30am.

Dates for our events in 2025 are:

Christmas Lunch      Friday 5<sup>th</sup> December

2026

## Spring lunch 10<sup>th</sup> April

## Autumn Fayre 17<sup>th</sup> October

Christmas lunch 11<sup>th</sup> December

Any further information on any of the above don't hesitate to give me a call (862570) Janet Goddard

PLEASE DO NOT USE THIS NUMBER TO BOOK TRANSPORT

## **Let There Be Light!**

Here in the WDS group of churches, we're all about the light. Light features so powerfully in our daily lives, and never more so than at this time of year, when all around us we see the twinkle of Christmas decorations — a sparkling reminder of warmth and hope in the midst of winter.

When the clocks went back at the end of October, there was, as always, a collective sigh as the nights drew in and it began to grow dark not long after the school run. Yet even in those early dusks, there's a blessing — for it's in the cold, dark evenings of winter that we notice the lights shining even more brightly.

We can all think of times throughout the year that have brought us challenges or sadness — moments that may have felt like we were in a dark place. But it's important to remember that even then, light still shines. Sometimes it might be faint or foggy, but it's there — in the hug from a friend, the offer of a cuppa, the smile from a colleague. Those small acts of kindness glow in our lives more than we often realise.

As we reflect on the Christmas story — the search for the light of the star that led the shepherds and wise men to Jesus — we're reminded of the hope He brings. His light shines in the darkness, and the darkness can never put it out. One of the most powerful Christmas readings from the book of John reminds us that Jesus is the life and light of the world and “that life was the light of all mankind. The light shines in the darkness, and the darkness has not overcome it.” (John 1.4-5)

If you come to one of the Christmas services in our local churches, the fairy lights are likely to be twinkling around you as you sing along to your favourite Christmas Carols, a reminder of the light we can all share this festive season. So as you put your decorations up take a moment to remember the reason for the season.

As you walk around our villages this Christmas, searching for the brightest most beautiful lights, remember that single star shining so brightly in the sky over the newborn baby who came to bring light and love to the whole world.

This Christmas, let's all be shining examples of love, hope, joy, and peace to those around us. Let's fill our communities with light and love as we celebrate together — for the brightest light is the one we share.

Sending love and light to you and yours this Christmas!

Revd Lynne Hawkins

Vicar of Welton, Dunholme and Scothern

### **Christmas Tree**

The Village Christmas Tree will be placed at Ellison Boulters School at the end of November. Thank you again to the Straw Family for their very kind donation of the tree and to Jonathan Backhouse from PlugSafeLincs Ltd for ensuring the safety of the lights. The Christmas Fair will be held on Friday 5<sup>th</sup> December.

### **Christmas Decoration Competition**

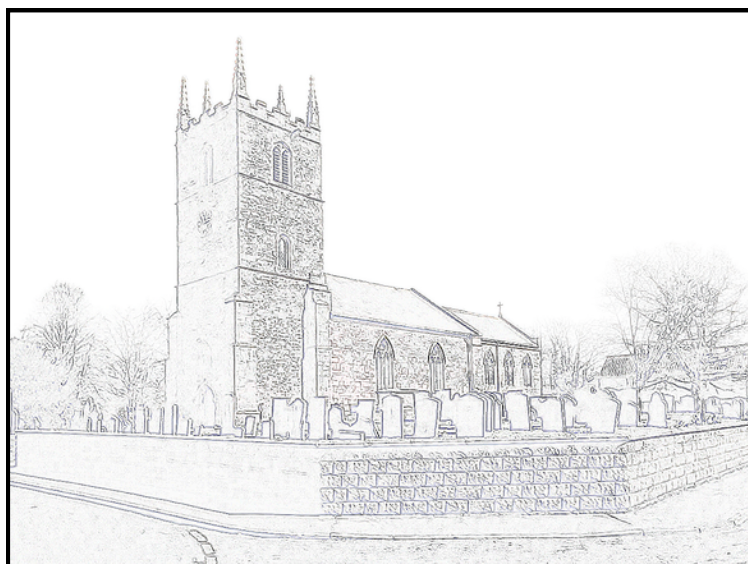
This year the Parish Council will be running the Christmas Decoration Competition again. Please decorate your houses, trees, windows and these will be automatically entered into our competition if they can be seen from the main road. Judges will be viewing from early December, and the winner will be announced before Christmas.



## Church Services in the Benefice - December 2025

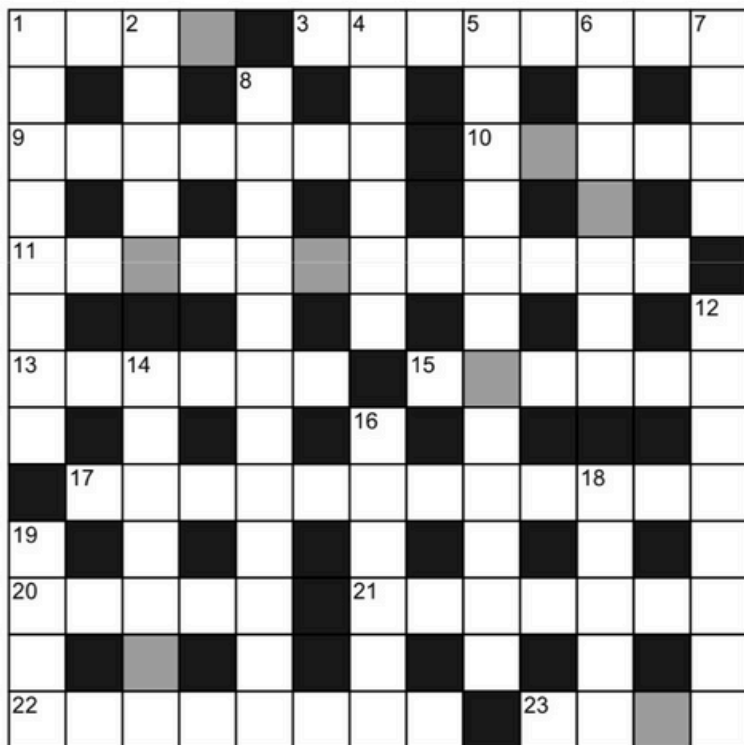
December	St Germain's Scothern	St Chad's Dunholme	St Mary's Welton
7 <sup>th</sup>	<b>9.15am</b> <b>Morning Prayer</b>		
14 <sup>th</sup>		10.30am Holy Communion	
21 <sup>st</sup>	<b>4pm</b> <b>Carol Service</b>	10.30am Morning Worship 6pm Carol Service	11am Holy Communion 6pm Carol Service
24 <sup>th</sup>	<b>11.15pm</b> <b>Midnight Eucharist</b>	4pm Crib/All age Nativity	4pm Crib/All age Nativity
25 <sup>th</sup>		10.30am Holy Communion	

Please Note: there are no services in the Benefice on Sunday 28<sup>th</sup> to give the clergy a rest, but there will be a Deanery Service at All Saint's. Nettleham at 10.30am.





# Just For Fun



## Across

- 1 Froth of soap and water (4)
- 3 Get the better of through being clever (8)
- 9 Look something over (7)
- 10 Small circular bands (5)
- 11 Blends; mixtures (12)
- 13 Composite fungus and alga (6)
- 15 Done in stages (6)
- 17 Beginning (12)
- 20 Impertinence (5)
- 21 Perennial herb (7)
- 22 Gone (8)
- 23 Sums together (4)

## Down

- 1 Drawing templates (8)
- 2 You usually do this whilst asleep (5)
- 4 Remove goods from a van (6)
- 5 Uncurled (12)
- 6 Canvas shelters (7)
- 7 Mission (4)
- 8 Skilled joiner (12)
- 12 Versions of a book (8)
- 14 Magnified view (5-2)
- 16 Chant; speak solemnly (6)
- 18 Large African antelope (5)
- 19 Move fast in a straight line (4)

Unscramble the letters in the shaded squares to reveal a themed word:

--	--	--	--	--	--	--	--

## **LINDSEY u3a (Welton)**

December, 2025 Newsletter ([lindseyu3a.org.uk](http://lindseyu3a.org.uk))

The clocks went back over a month ago and the winter solstice, the day with the fewest hours of daylight, will fall this year on Sunday, 21st December. Looking on the bright side, after the 21st daylight hours will increase. In the meantime we can look forward to Christmas. To get us in the mood at our next General Meeting on 4th December we have organised some seasonal entertainment. Cue for Christmas cracker joke: "Why are Christmas trees so bad at knitting? They always drop their needles!" If that doesn't lift your spirits then join us on the 4th and prepare to be entertained by a talented trio.

Lindsey u3a is local, friendly, informative, low cost and open to those of retirement age not in full time employment. If that's you find out what our interest groups are getting up to by looking at our website [lindseyu3a.org.uk](http://lindseyu3a.org.uk). There's an A-Z of interest groups, where and when they meet plus visits of local interest, theatre visits, lunches and holidays run by members for members. Find out what's on and join in with whatever catches your eye.

We meet at Welton Village Hall usually on the first Thursday of the month. You are invited with no obligation to one of our meetings. Doors open at 9.30am for tea/coffee and an opportunity to chat to interest group leaders in the Welton Room followed by a speaker in the hall at 10.30am. If you decide to come along for a look, tell someone on reception you are new and one of our friendly greeters will show you round and answer any questions.

On 4th December Tom Lane and friends will entertain us with music, songs and seasonal anecdotes. We've enjoyed their presentations in the past. Not only are they entertaining but they're also informative about the history of our Christmas traditions. Our first speaker in the New Year on 8th January will be Clive Wilson with his talk entitled "Sustainability is Key".

Two years ago he inspired the formation of our Environmental Group which has worked so hard to encourage us to collect items that are difficult to recycle such as blister packs/batteries and much more.

We aim to have a variety of speakers over the course of the year so there is something for everyone. u3a members can also join various online talks, workshops and courses. You can find out more from [www.u3a.org.uk](http://www.u3a.org.uk)

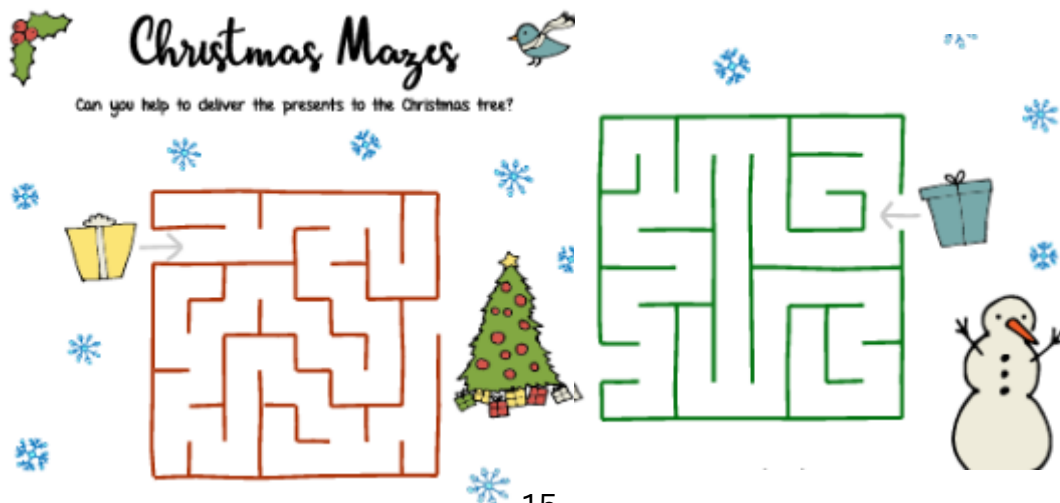
If you can't come to one of our general meetings you could join us at the 'Gardeners' Retreat' tearoom at Scothern Nurseries for a cuppa and a chat at 10.15am on the fourth Thursday of the month. There will be no coffee morning on Christmas Day so the next one will take place on 29th January, 2026. Whether you're a newcomer wanting to know more about Lindsey u3a or if you're already a member and just fancy a cuppa, maybe a scone and a chat, do come along. Everyone is welcome.

Everything you need to know about us can be found on our website [lindseyu3a.org.uk](http://lindseyu3a.org.uk). Should you require any further information please contact Luke Pickering

Email: [lukep@lahestates.co.uk](mailto:lukep@lahestates.co.uk) Mob: 07774 251197

Best wishes

Sheila Nash



## **Food Waste Collection - 2026**

As part of a government mandate under the Environment Act 2021, Lincolnshire will begin rolling out weekly food waste collections from 2026. This is a legal requirement for all waste collection authorities and aims to improve recycling rates and reduce environmental impact.

The rollout is being coordinated by Lincolnshire County Council and the Lincolnshire Waste Partnership, working closely with district and borough councils. West Lindsey will be going live with the food waste collection from March next year. Specific dates will be communicated in due course.

Each household will receive:

- A 5-litre indoor caddy for daily food waste
- A 23-litre outdoor caddy for kerbside collection
- A roll of liners for the indoor caddy

Both caddies are designed to be secure, odour-resistant, and space-efficient. Food waste will be collected weekly using dedicated vehicles, and residents will receive full guidance with their caddies.

The collected food waste will be diverted from the Energy from Waste plant to a local anaerobic digestion facility, where it will be converted into biogas and fertiliser – supporting both clean energy production and local agriculture.

This is a national legal requirement, not a local decision.

The service is free and aims to reduce general waste and improve sustainability.

Even households that compost should use the caddy for items like meat, dairy, and cooked food.

The caddies are designed to be easy to use and store.



## LCC Household Waste Recycling Centre Feedback survey



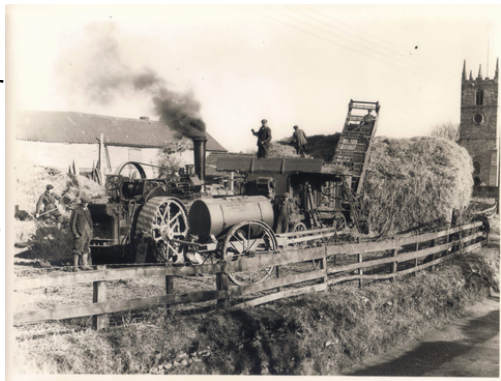
The Household Waste Recycling Centre Feedback survey is now live, and LCC are keen to hear from Lincolnshire residents. These centres play a vital role in helping our communities recycle responsibly and dispose of items that can't be managed at home. Feedback from residents will help shape future improvements and ensure these community assets continue to meet local needs.

Have your say: <https://www.letstalk.lincolnshire.gov.uk/hwrc> Or scan the QR code below



Closing date: 24 December

This photo was taken in July 1938 of a threshing scene near Scothern Church using a steam traction engine driving other machinery for threshing corn long before the introduction of the modern combine harvester.



also a picture of the engine taken earlier this year by the owners.  
Best regards Bernard Bartram

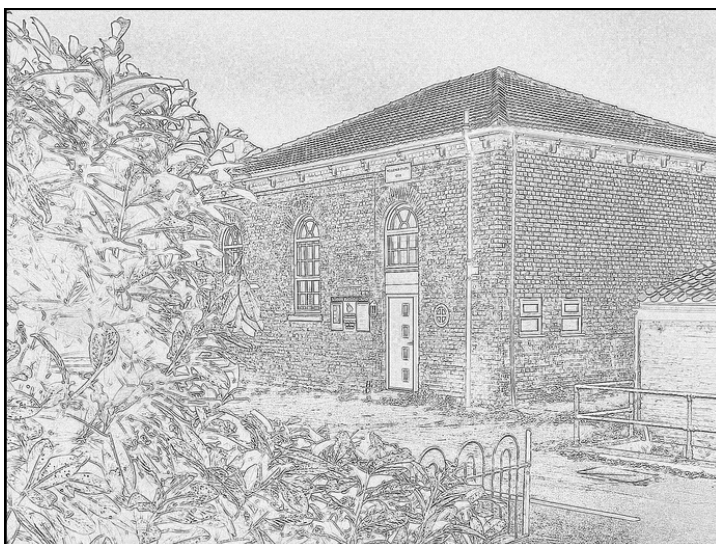
## THIS DECEMBER IN SCOTHERN CHAPEL

Sunday 7 December 10.30 - We are at Scothern Chapel with Rev Sandy Osgerby for Communion

Sunday 14 December 3pm - We are at Scothern Chapel for an afternoon of Carols with Rev Richard.  
All welcome. Come and Sing some old favourites

Sunday 21 December 4pm  
Our friends at St Germain's have their Carol Service

Sunday 28 December 10.30 There is only one Methodist service in the area led by Ralph Osgerby at Welton Chapel



### **Scothern Methodist Chapel CHAT & COFFEE**

on the Thursday 11<sup>th</sup> December

We drink coffee, munch biscuits and talk informally about all sorts of things –We might be unable to do much, but we can share, and think about things and perhaps say a prayer or two.

Come and join us!

## A Meaningful Christmas

When I was a child, Christmas was all about the presents. I couldn't wait for relatives to arrive because they always brought gifts — a book from my aunt, a postal order from Grandma, and a stocking with an orange and a bar of chocolate. I only remember little bits of those Christmases now, but the gifts have stayed in my memory for years.

It wasn't until my late teens, when I became a Christian, that I realised Christmas had anything to do with Christianity at all! What had once been a fun but rather empty celebration suddenly became full of meaning.

For Christians, the Christmas season actually begins with Advent — the four weeks leading up to Christmas — and runs until Epiphany on January 6th. Advent simply means “coming,” and it's a time to prepare our hearts for the coming of Jesus, both his birth and his promised return. The candles, wreaths, prayers and calendars all help us to reflect on the themes of hope, peace, joy and love.

Epiphany is another lovely word. It comes from the Greek and means “to appear” or “to reveal.” It reminds us of the story of the Magi, or wise men, who travelled to visit the baby Jesus. They were Gentiles, people from outside the Jewish faith, so their visit shows that Jesus came for the whole world, not just for one group.

The gifts they brought — gold, frankincense and myrrh — each told part of Jesus' story. Gold showed he would be a king, frankincense pointed to his role as a priest, and myrrh hinted at his death and burial.

These days, I can't help thinking of Christmas as a time that also prepares us for Easter. The birth of Jesus is God's way of showing his love for everyone — his gift to us all. That always brings to mind a verse from Christina Rossetti's beautiful carol *In the Bleak Midwinter*:

What can I give Him, poor as I am?  
If I were a shepherd, I would bring a lamb;  
If I were a wise man, I would do my part;  
Yet what I can I give Him — give my heart.

So as we head into this Christmas season, my prayer is that it will be a meaningful time for you — full of joy, love and perhaps a new sense of what this season is really about.

Every blessing, Rev Richard

**Welton Village Library and Community Hub**  
**Based at Manor Park, Hackthorn Road**  
**Welton LN2 3PA**



**December Opening Details:**

Monday 12noon to 5pm, Tuesday 9:30am to 2:30pm

Wednesday & Saturday 10am to 12 noon up to and including Tuesday 23rd December. We are then closed and will re-open on Tuesday 6th January 2026 and resume normal hours.

It may be that a number of you are hoping for a much anticipated book as a present on 25<sup>th</sup> December, if so we do hope you receive your wish. If you are a keen reader you may also want to stock up with a few other books as Santa's budget may not run to more than one. Also, sadly, some people may be facing a situation where they know that their circumstances dictate there will be no book as a present. The answer to both situations is to pop along to the library and take a few books out, hopefully you will have the time to read them but no worries if not as it will cost you nothing. As you can see above our hours are restricted this month due to the holidays but there is no need to be concerned as lending times will be extended. In addition if you have any worries about a return date and you have a library card PIN you can always log on to Lincolnshire Libraries or onto the app if you have one installed on a smart phone to get a lending extension.

December is of course an exciting time for children and on Saturday 13<sup>th</sup> December at 10:30am we have a craft event for accompanied 4 to 11 year olds which will include the opportunity to make a festive gnomes for our ever growing indoor tree. We will also be continuing our weekly storytimes for pre-school children at 9:30am each Tuesday, up to and including a festive storytime on 23rd December.

We have more exciting events planned in 2026 for both adults and children that we will start to outline next month.



As we head into the festive season let us finish with a very relevant quote:  
“When I discovered libraries, it was like having Christmas every day.”  
(Jean Fritz – Children’s Author). Do take the time to discover us if you haven’t already, a library card makes a fantastic free gift and hopefully one to start a lifetime of reading enjoyment for a child.  
Best wishes for an enjoyable festive season from all the Library Volunteer team and we look forward to seeing readers old and new in the New Year.

Mike - Library Volunteer  
Facebook page @WeltonVillageLibrary



**Lincolnshire Mobile Library Service**

January 2026 – December 2026

Friday Route 3 (Mobile Library North)

January	February	March	April	May	June
9 <sup>th</sup>	6 <sup>th</sup>	6 <sup>th</sup>	3 <sup>rd</sup>	1st & 29 <sup>th</sup>	26 <sup>th</sup>
July	August	September	October	November	December
24 <sup>th</sup>	21 <sup>st</sup>	18 <sup>th</sup>	16 <sup>th</sup>	13 <sup>th</sup>	11 <sup>th</sup>

**Scothern Village Hall 10 - 10.30am**

Every effort is made to ensure the mobile library arrives  
at each stop on time

To access your Library account visit:  
[better.org.uk/library/lincolnshire](https://better.org.uk/library/lincolnshire)

Your reservation pick-up branch is: Mobile Library North  
For the latest news on this route, enquiries or renewals, please  
contact

the Customer Service Centre On 01522 782010 or  
[graham.owen@gll.org](mailto:graham.owen@gll.org)

---

## Community Coffee Morning

Every Tuesday  
10am to midday  
held in the  
Methodist Chapel  
December 2, 9, 16, 23, 30.

All welcome.

---



After jumping back into the dating pool, single mother Bridget Jones finds herself caught between a younger man and her son's science teacher.



**Friday 12th DEC**  
**7 for 7.30pm**  
**Scothern Village Hall**



**The Veterinary Hospital**  
175 Newport  
Lincoln LN1 3DZ  
32 Lincoln Road  
Skellingthorpe  
Lincoln LN6 5UU

## Mobile Veterinary Clinic

*Monday mornings* at the  **Cherry Tree Garden Centre**  
A158 Sudbrooke LN2 2QU

Book an appointment for your pet to see our vet in our mobile clinic – or we can arrange a home visit instead

 routine appointments    vaccinations    treatment for poorly pets

fully supported by our bricks-and-mortar hospital in Lincoln

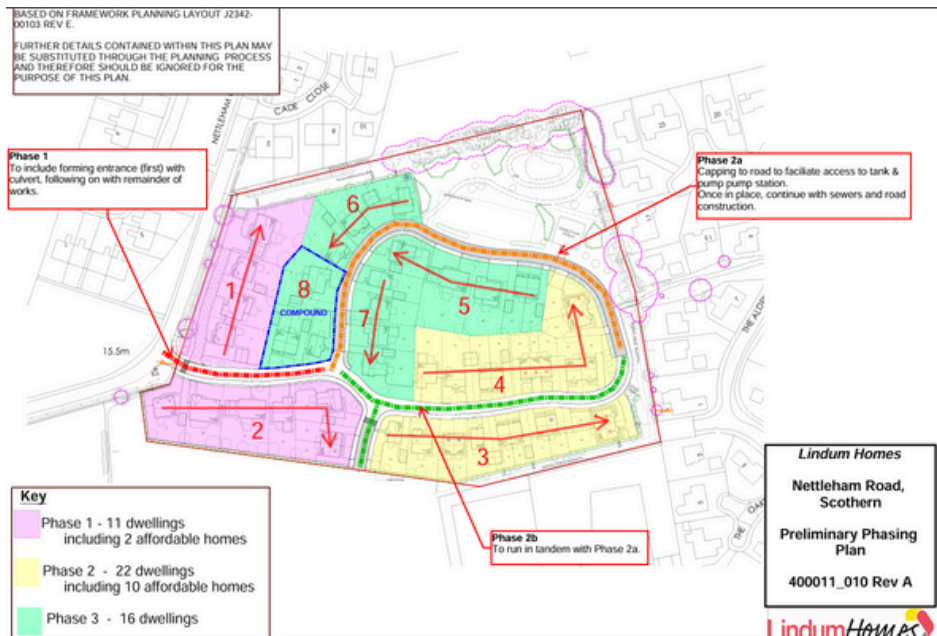


Call us:  
**01522 800333**

find us online:  
**vhvets.co.uk**  
[f /vhvets.co.uk](https://www.vhvets.co.uk)



# West Thorne Grange



Your paragraph text

## Residential Development of 49 Dwellings, land off Nettleham Road, Scothern

Lindum Homes received planning approval for the development of the site earlier this year and the development consists of 37 and 12 affordable houses. Preparatory works commenced from 3rd November 2025, securing the site and some continued site clearance.

During Phase 1, install the access from Nettleham Road and continue to install the first leg of road and drainage into the site. After this, commence house building from the western, Nettleham Road end of the site. See phasing plan above for details but may change through the construction of the scheme.

Working hours have been approved through the planning permission and will be 7.30am – 6pm (although usually all work will cease by 5pm or earlier, particularly in Winter) Monday to Friday, and by exception 8am – 1pm on Saturdays. There will be no work on Sundays or Bank Holidays.

Please contact the site manager or construction manager should you have any issues with the construction phase -

Stewart Smith - [stewart\\_smith@lindumgroup.co.uk](mailto:stewart_smith@lindumgroup.co.uk) or

Mathew Hydes - [matthew\\_hydes@lindumdumgroup.co.uk](mailto:matthew_hydes@lindumdumgroup.co.uk)

**Looking for support?**

Access our directory of services to support our armed forces communities




**Connect to support**  
Lincolnshire



## Armed Forces Community Directory

Following extensive research this directory was co-produced with input from service families, HIVEs and veterans' associations. It was, without exception, that people wanted a directory where they could find not only national information, but regional and local information where they could seek help, support and advice.

We have now produced this simple but effective directory which lists a wide range of national, regional and local organisations providing support and advice to the Lincolnshire Armed Forces Community including:

**Need help or support?**

- Physical & Mental Health
- Finance, Benefits & Hardship
- Children, Young People & Families
- Employment & Training
- Support & Social Groups
- Housing & Homelessness



 [lincolnshire.connecttosupport.org/armed-forces-community-directory](http://lincolnshire.connecttosupport.org/armed-forces-community-directory)

Funded by South Kesteven District Council



**SOUTH KESTEVEN DISTRICT COUNCIL**



 [Paul\\_Drury@n-kesteven.gov.uk](mailto:Paul_Drury@n-kesteven.gov.uk) for more information

To advertise in the Scothern News, email: [scothern.news@gmail.com](mailto:scothern.news@gmail.com)

Local Scothern notices/events/voluntary groups - free of charge.

Monthly cost to place an advert:

1/4 page - £8,

1/2 page -£12,

Full page -£18

Invoices will be sent from Scothern Parish Council

# Computer Problems? **James.tcm** ( the computer man )

I can help with home computer issues ranging from emails & printers to internet connections, viruses & upgrades etc.

If you need a new PC I can help you choose, help set your new PC up and transfer everything over from your old one.

Local & Independent - I'll come to you!  
Text or Email preferred or call James on

## 07568 174 474

james.tcm@outlook.com

## CASH PAID FOR

Broken & Unwanted Jewellery  
Gold, Silver, Old Coins, Sovereigns  
Silverware & Other Antiques

Text, Email or Call: **07512 058 557**  
**oldhallantiques@gmail.com**

## Threshold

Threshold is a family church which has been serving the Lincoln villages for over 25 years. We all get together most weeks at Welton Village Hall.

Everyone welcome!

Check out our website for more info:

[www.thresholdchurch.co.uk](http://www.thresholdchurch.co.uk)

Sunday 7<sup>th</sup> December

**Church Gathering**

Sunday 14<sup>th</sup> December

**Community Cafe**

Sunday 21<sup>st</sup> December

**Christmas Special**

Thursday 25<sup>th</sup> December

**Christmas Day Gathering**

Sunday 4<sup>th</sup> January

**Church Gathering**

Sunday 11<sup>th</sup> January

**Community Cafe**

Sunday 18<sup>th</sup> January

**Church Gathering**

Sunday 25<sup>th</sup> January

**Church Gathering**

All 10am to noon in  
Welton Village Hall

## SCOTHERN

## SEWCIAL

10am until 4pm

£10pp

Contact [emma.cc@hotmail.co.uk](mailto:emma.cc@hotmail.co.uk)

### Dates for 2026

January 4th

February 1st

March 1st

April 12th

May 3rd

June 7th



Tea, coffee, cake  
provided



## Parish Council News

### Wed, 12<sup>th</sup> November meeting -

- 5 councillors present at the November meeting and 1 resident for the Public participation who spoke about the flooding on Craypool Lane; the War Memorial and the Church Clock issues.
- The footpath from Church St to Grange Park has been repaired.
- The old wooden play equipment in the play area has now been removed, turf will be put down in the next few weeks in preparation for the new swings.
- WLDC Community Funding -had a large number of applications so the decisions are taking longer for the Playarea Grant Request
- The road sweeper has been requested from WLDC to remove the leaves & straw from the sides of the roads. And LCC have been contacted to clear the blocked drains/gullies from the debris.
- Cllr Jane Smith has followed up the request with highways to reduce the speed limit between Scothern & Sudbrooke and that they conduct a speed limit review asap.
- The 2026/27 Budget & Precept was discussed at the meeting with a Budget of £32,106 and a Precept of £30,000- same as this year.
- Recent flooding has been reported on Craypool Lane following the prolonged rainfall - both Anglian Water & LCC have been contacted with requests to investigate. We will keep reporting and requesting answers.
- Quotes for the Village Planters to be obtained for the December meeting - emptying/planting and maintenance in the Summer and the Winter for the 5x planters around the village and the 3x window boxes at the village hall.
- A resident contacted the council with concerns about the speed of vehicles through the village particularly Dunholme Rd and Main. The council to raise this with Highways & Cllr Jane Smith for suggestions to the issue.
- A grant funding request was received from the SRC for a £100 donation towards a British Legion 'unknown Soldier' figure.



**PLANNING APPLICATIONS in Scothern** can be viewed on the West Lindsey District Council website.

<https://westlindsey-publicportal.statmap.co.uk/horizoNext/publicportal>  
Scothern is in the Sudbrooke Ward, Parish: Scothern

View the planning portal for all current & past applications & decisions from WLDC:

**Ref WL/2025/01096, Planning application for the siting of 2no. shipping containers to be used for storage. Sothern Village Hall**

**Ref: WL/2025/00739, Solar Farm Land off Dunholme Rd - WLDC update - extension of time for application, 12<sup>th</sup> Dec 2025**

---

Parish Council Meetings take place on the 2<sup>nd</sup> Wednesday of each month (no meeting in August) at 7.30pm in the Methodist Chapel. Each meeting has a 10-minute public forum, during which members of the public may make a short statement to the Council in relation to matters on the agenda, matters of concern or interest.

If members of the public have any matters that they wish to be discussed, they should submit them to the Clerk one week in advance of the meeting so that it can be added to the agenda. Notices of meetings and previous meeting minutes are posted on the Parish Council Notice Board outside the Village Hall and on our website: <https://scothern.parish.lincolnshire.gov.uk/>

### **The next PC meeting is on 10<sup>th</sup> Dec 2025**

Scothern Parish Council is made up of seven members who work for the benefit of the community and all local residents.

Jackie Atkins

Derek Canton

Robert Creaser

Jane Johnson -Chair

Barnaby Patchett -Vice

Mark Unwin

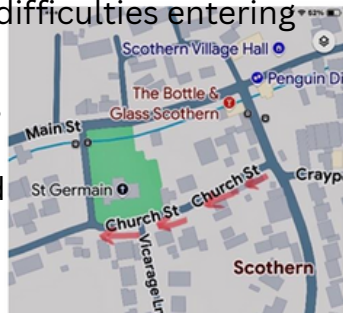
Sian Watt Jones

## Church St – One way system – We would like your views & comments.

Scothern PC have been approached by a resident with a suggestion to make Church St from Sudbrooke Rd to the Church Corner (East to West), a one-way system. The reasons for this are the number of parked vehicles & the difficulties entering and exiting Vicarage Lane; vehicles being forced on the wrong side of the road meeting vehicles; difficulties exiting Church St and turning left onto Sudbrooke Rd due to parked vehicles on Sudbrooke Rd.

Only comments/views sent to the clerk,  
clerk@scothern-pc.gov.uk 07549 137538 or  
via the PC website will be noted & discussed at a future meeting.

\*\*\*\*\*



### Fix My Street - Report, view, or discuss local problems

- potholes, highways, broken paving slabs, footpaths, street lighting, tree blocking the highway, flooding

Enter a Lincolnshire postcode, street name and area, or check an existing report number:  
use QR code or <https://fixmystreet.lincolnshire.gov.uk/>



SCAN ME



**Report it -** Use our online forms to report an issue or tell us about a change. It's the quickest and cheapest way to contact us. No waiting and your report will go straight to the correct service area whatever time of day you report it.

- Bins – collection day/missed, waste, fly tipping, abandoned vehicles, dog waste bins, litter, ASB, street cleaning, street name plate damage.

Use QR code or <https://www.west-lindsey.gov.uk/report-it>



SCAN ME

# HOW TO REPORT A FLOOD



**IN THE EVENT OF A FLOODING EMERGENCY, YOU SHOULD  
FOCUS ON THE SAFETY OF YOURSELF AND YOUR FAMILY**

## IF YOU NEED TO EVACUATE

If there is an immediate risk to life, **call 999** and ask for the Fire Service

## IF WATER HAS ENTERED YOUR HOME OR BUSINESS

If water has entered the living areas of your property and you cannot stay safely:

**HOMEOWNERS**

Contact your insurer directly

If you are not insured, contact your district council's housing team for assistance

**PRIVATE RENTERS**

Notify your landlord immediately

**COUNCIL TENANTS**

Contact your district council's housing team

or visit [www.lincolnshireresilienceforum.org/risks/river-surface-groundwater-flooding](http://www.lincolnshireresilienceforum.org/risks/river-surface-groundwater-flooding)

## IF WATER IS LIKELY TO ENTER YOUR PROPERTY

If possible, obtain sandbags from a local supplier for faster support

If you cannot access sandbags, report your need on [www.fixmystreet.lincolnshire.gov.uk](http://www.fixmystreet.lincolnshire.gov.uk)

Alternatively call 01522 782082 (Please note that it is quicker to report online)

**WE DO NOT HAVE A DUTY TO PROVIDE SANDBAGS  
BUT WILL MAKE EVERY EFFORT TO ASSIST**



## TO REPORT FLOODING

**FLOODING AFFECTING THE HIGHWAY** Report it on FixMyStreet  
**FLOODING TO PROPERTY OR LAND** Let us know via FixMyStreet or  
call 01522 782082 (Note there may be delays during high demand)

## STAY INFORMED

For the latest updates during a flooding incident

Follow **LINCOLNSHIRE LRF** on X, Facebook or online at [www.lincolnshireresilienceforum.org/news](http://www.lincolnshireresilienceforum.org/news)

Listen to **BBC RADIO LINCOLNSHIRE** online, on DAB, or on **94.9FM / 104.7FM**

Sign up to Flood warnings at [www.gov.uk/sign-up-for-flood-warnings](http://www.gov.uk/sign-up-for-flood-warnings) and

[www.check-for-flooding.service.gov.uk/alerts-and-warnings/lincolnshire#warnings](http://www.check-for-flooding.service.gov.uk/alerts-and-warnings/lincolnshire#warnings)



## Local Contacts:

**Scothern Parish Council:** [scothern.parish.lincolnshire.gov.uk](http://scothern.parish.lincolnshire.gov.uk)  
Clerk/RFO - Lisa Brooks-Sleight  
[clerk@scothern-pc.gov.uk](mailto:clerk@scothern-pc.gov.uk) 07549 137538

**County Councillor:** Jane Smith 01522 552222  
[cllrj.smith@lincolnshire.gov.uk](mailto:cllrj.smith@lincolnshire.gov.uk)

**District Councillor:** Baptiste Velan 07551 722022  
[cllr.b.velan@west-lindsey.gov.uk](mailto:cllr.b.velan@west-lindsey.gov.uk)

**West Lindsey District Council:** 01427 676676

**Lincoln County Council:** 01522 552222

**Scothern Recreation Centre Village Hall:** [www.scothernvillagehall.org](http://www.scothernvillagehall.org)  
Bookings: 16 Weir Farm Paddock - [scothernvh@hotmail.co.uk](mailto:scothernvh@hotmail.co.uk)

**St Germain's Church:** [pcc.stgermain@gmail.com](mailto:pcc.stgermain@gmail.com)  
Parish Office - for funerals, weddings and baptisms  
07468 149695, [lawreslmp@gmail.com](mailto:lawreslmp@gmail.com)  
Vicar - Revd. Lynne Hawkins 01673 565022  
Churchwarden & illness/hospital visits - Jean Drewery  
01522 752489 [m.drewery48@btinternet.com](mailto:m.drewery48@btinternet.com)

**Methodist Chapel:** [www.lincolnmethodist.org.uk](http://www.lincolnmethodist.org.uk)  
Minister Revd. Richard Mottershead  
07771 624885, [rpm2000.sp@gmail.com](mailto:rpm2000.sp@gmail.com)

**Scothern Cricket Club:** Jacob Smith, 07826 060091

**Ellison Boulters After School Club:** 07736 575155

**25th Lincoln Scout Group (Scothern):** Nick Cornwell-Smith  
07824 995070 [nick.cornwell-smith@lincolnscouts.org.uk](mailto:nick.cornwell-smith@lincolnscouts.org.uk)

**Scothern Players:** Lynne Ballantine - [donorfairy@aol.com](mailto:donorfairy@aol.com)

## Useful Information

Witham u3a - 3rd Thursday of each month  
Reepham and Cherry Willingham Village Hall  
Contact - Gerry Wiswould 01673 866718

Lindsey u3a -1st Thursday of each month  
Welton Village Hall  
Member Secretary - Tricia Barnes 07855 178612

Scothern Recreation Centre  
Committee meetings 1st Monday of each month 7:45pm  
Beevers, Cubs, Scouts Tuesdays 5-9pm  
Scothern Players Thursdays 7pm all evening  
Flix in Stix - Friday - dates on a poster.  
Scothern Village Hall Secretary - Gill Radley  
scothernvh@hotmail.co.uk

---

### West Lindsey District Council

Have a look at the WLDC Facebook page for all the official information in the area—local news, travel and events.

Also, sign up for email updates from WLDC for the latest information straight to your inbox on events all over the West Lindsey district including the Trinity Arts Centre, Leisure Centre and Markets.  
[www.west-lindsey.gov.uk](http://www.west-lindsey.gov.uk)

---

### POST OFFICES

Sudbrooke Village Store, 1/2 Holme Drive, Sudbrooke 01522 751438  
Nettleham Co-Op, The Green, Nettleham  
Welton Co-op and The Carlton Centre Co-op

### PHARMACY

Lincoln Co-op, Church Street, Nettleham 01522 751702

### HOSPITAL

Lincoln County Hospital, Greetwell Road, Lincoln 01522 512512

## **DOCTORS**

Nettleham Medical Practice, Lodge Lane. 01522 751717  
[www.nettlehammedical.co.uk](http://www.nettlehammedical.co.uk)  
Welton Health Centre, 4 Cliff Road, LN2 3JH. 01673 862232  
[www.weltonsurgery.co.uk](http://www.weltonsurgery.co.uk)

## **POLICE**

Emergencies - 999      Non-emergencies 101  
[www.lincs.police.uk/contact/af/contact-us-beta/contact-us/](http://www.lincs.police.uk/contact/af/contact-us-beta/contact-us/)  
Linwood Road, Market Rasen, LN8 3QE  
Open 9am - 5pm Monday to Friday

## **BUSES**

P C Coaches 01522 533605 CallConnect 03452 343344  
Lincoln Bus Station 01522 873655  
Bus timetables are posted on the village notice boards by the Village Hall, opposite St Germain's Church and at the bus stops on Dunholme Road and Nettleham Road.  
PC Coaches 43 to Lincoln City Centre and return  
CallConnect -On demand service call 0345 234 3344 or  
<https://lincsbuses.info/callconnectapp>

## **NEWSAGENTS**

Beckside Newsagents, Nettleham 01522 751331  
Nettleham Convenience Stores, Lodge Lane 01522 753345

## **SCHOOLS**

Ellison Boulton CofE Academy,  
Sudbrooke Road, Scothern 01673 862392  
William Farr CofE Comprehensive School,  
Lincoln Road, Welton 01673 866900

## **SHOPPING**

Sudbrooke Village Store, 1/2 Holme Drive, Sudbrooke  
Lincoln Co-op, The Green, Nettleham  
Lincoln Co-op, Market Rasen Road, Dunholme





## Events -

Quiz every Monday 8pm  
And card bingo  
Free food at half time.



## Graham Hill Qualified Painter and Decorator Interior and Exterior



**1 Bridge View  
West Rasen  
Market Rasen  
LN5 3LS**

**Mobile: 07857 626706**

## Puzzle Answers

S	U	D	S		O	U	T	S	M	A	R	T
T		R		C	N	T		W		A		
E	Y	E	B	A	L	L		R	I	N	G	S
N		A		B		O		A		I		K
C	O	M	B	I	N	A	T	I	O	N	S	
I				N		D		G		G		E
L	I	C	H	E	N			P	H	A	S	E
S		L		T		I		T				I
	C	O	M	M	E	N	C	E	M	E	N	T
S		S		A		T		N		L		I
C	H	E	E	K		O	R	E	G	A	N	O
U		U		E		N		D		N		N
D	E	P	A	R	T	E	D		A	D	D	S

Keyword: HINDUISM

WWW.SCOTTHERN-NURSERIES.CO.UK  
DUNHOLME ROAD, SCOTTHERN,  
LINCOLN, LN2 2UD  
01673 862297

**SEASONAL RANGE OF  
INDOOR & OUTDOOR  
PLANTS**

**GIFTWARE, CARDS  
& VOUCHERS**

**OVER 50 YEARS OF  
GROWING EXPERIENCE**

**KNOWLEDGEABLE  
& FRIENDLY STAFF**

Gardeners Retreat  
Tea room

## Scothern Bus Timetable

The No.43 timetable is below.

Journeys from Scothern to Nettleham can be made by booking the CallConnect service:

Ring 0345 234 3344 or download the Callconnect App

# 43

Lincoln Central Bus Station **stand N**  
 Lincoln County Hospital  
 Lincoln Crofton Drive  
 Lincoln Carlton Boulevard  
 Sudbrooke Elm Drive Shops  
 Scothern St Germans Church  
 Langworth Scothern Lane  
 Stainton by Landworth Scothern Ln  
 Snelland Telephone Box  
 Wickenby Church  
 Lissington White Hart  
 Linwood  
 Market Rasen Market Place

Market Rasen Market Place  
 Linwood  
 Lissington White Hart  
 Wickenby Church  
 Snelland Telephone Box  
 Stainton by Landworth Scothern Ln  
 Langworth Scothern Lane  
 Scothern St Germans Church  
 Sudbrooke Elm Drive Shops  
 Lincoln Carlton Boulevard  
 Lincoln Crofton Drive  
 Lincoln County Hospital  
 Lincoln Central Bus Station

## Lincoln | Sudbrooke | Scothern | Market Rasen

Mondays to Fridays excluding public holidays

	0815	1005	1115	1225	1435	1735
	0820	1015	1125	1235	1445	1745
0620	▼	▼	▼	▼	▼	▼
▼	▼	1019	1129	1239	1449	1749
0632	0832	1029	1139	1249	1459	1759
0635	0835	1033	1143	1253	1503	1803
▼	▼				1508	1808
▼	▼				1511	1811
▼	▼				1515	1815
▼	▼				1519	1819
▼	▼				1522	1822
▼	▼				1526	1826
0655	0855				1531	1831

runs in  
school holidays  
only

0700	0900				1535	1835
0705	0905				▼	▼
0709	0909				▼	▼
0712	0912				▼	▼
0716	0916				▼	▼
0718	0918				▼	▼
0720	0920				▼	▼
0725	0925	1035	1145	1255	1550	1850
0729	0929	1039	1149	1259	1554	1854
0745	0945	1055	1205	1315	▼	▼
▼	▼	▼	▼	▼	▼	1905
0750	0950	1100	1210	1320	1605	
0800	1000	1110	1220	1330	1616	

runs in  
school holidays  
only

# Diary of Events in December:

- 1 - SRC meeting, Scothern village hall 7.45pm
  - 1 - Bottle Glass Quiz night, 8pm
  - 2 - Community Coffee morning, Methodist Chapel 10-12pm
  - 4 - Lindsey u3a Welton village hall 9.30am
  - 6 - Christmas Market, Bottle & Glass 12-4pm
  - 6 - Carols with Cabra Singers village hall 4pm
- 

- 8 - Bottle Glass Quiz night, 8pm
  - 9 - Community Coffee morning, Methodist Chapel 10-12pm
  - 10 - Parish Council meeting in the Methodist Chapel 7.30pm
  - 11 - Methodist Chapel, Chat & Coffee 10.30am
  - 12 - Mobile Library, Scothern Village Hall 10-10.30am
  - 12 - Flix in the Stix, Bridget Jones, 7 for 7.30pm
  - 14 - Carols, Methodist Chapel 3pm
- 

- 15 - Bottle Glass Quiz night, 8pm
  - 16 - Community Coffee morning, Methodist Chapel 10-12pm
  - 16 - Witham u3a Reepham and Cherry Willingham Village Hall
  - 17 - Carols in the Carpark, 7pm
  - 21 - St Germain's Carol Service, 4pm
- 

- 22 - Bottle Glass Quiz night, 8pm
  - 23 - Community Coffee morning, Methodist Chapel 10-12pm
  - 25 - HAPPY CHRISTMAS TO YOU ALL
- 


- 29 - Bottle Glass Quiz night, 8pm
  - 30 - Community Coffee morning, Methodist Chapel 10-12pm
- 

**Send us your January events for next months issue**

-----

Scothern News is produced by Scothern Parish Council  
Deadline for articles & events for the January issue is  
**9<sup>th</sup> December 2025 - [scothern.news@gmail.com](mailto:scothern.news@gmail.com)**



In Remembrance  
On behalf of Scotland  
In proud memory of those who  
gave their lives for our country  
Their names shall live forever  
We will remember them  
  
ROYAL SCOUTS LEAGUE

Remembrance  
Sunday  
9<sup>th</sup> November

