

SCOTHERN NEWS

APRIL 2026



What's in April's News

Page	
3	Welcome
4	Grange Park
5	Celebrating Scothern Play Park 14 th March 2026
6	Scothern History - Scothern's links to Lady Godiva
7	Scothern's Fashion Show
8	The Positive Season of Spring – Reverend Richard
10	Church Services in the Benefice – April 2026
11	Flix in the Stix – Emily 24 th April 2026
12	A Scothern Gardener's notes for April
14	Just for Fun
16	Welton PDA
18	Witham U3A
20	Lincolnshire Mobile Library Services
21	Welton Library and Community Hub
24	Dunholme Camera Club
26	Parish Council News
27	Notice of Annual Parish Meeting 1 April 2026
28	Bus Timetable
30	Local Contacts
31	Useful Information
35	Diary of Events
Back	Scothern Play Park
Cover	

Welcome

It's lovely to be in April but I am hoping that we are not going to experience any April Showers, we seem to have had enough of those during January, February and March.

During one of the nice sunny days in March I took the opportunity to stroll down to Grange Park and enjoy the spring flowers and emerging blossom. I was inspired by Melanie's March article on Grange Park and bird watching and opened my bird listening app on my phone and recorded a Eurasian Wren, House Sparrow, Common Chaffinch, Eurasian Blackbird, European Greenfinch, European Robin and a Song Thrush, I was delighted, so many more than in my own garden.

This month's magazine celebrates the opening of the new equipment in the Play Park at the Villiage Hall, the photographs are shown on the front and back cover and more information can be found on page 5. We have another article with great advice about gardening in April from our resident Gardener, and Rod Wilson provides more about Scothern's past, don't forget to check out his website www.scothernhistory.co.uk

Thank you

This month a Big Thank you goes to Hefin and Esther for delivering to part of Main Street and to all of Dunholme Road.

Scothern News is an informal newsletter for the interest of its residents. It is produced and funded by the Parish Council it does not represent "official" council views or opinions. Formal Council minutes can be found on the Council website:

scothern.parish.lincolnshire.gov.uk

Grange Park

In today's busy world, we are encouraged to take time out for ourselves, Grange Park can provide that space. On Thursday 19th February, I was wandering through and was delighted to hear the church clock chime the hour, it has been missed so much! How lovely to have it back even though it does mark how time is passing by.

Whilst walking I noticed some daisies struggling to do their best to flower, which reminded me of the lines from John Clare, "The daisy is a happy flower and comes in early spring and brings with it the sunny hours when bees are on the wing". The name "Daisy" is thought to come from "days eye" as the flowers open at dawn each day and close at night. We get the expression fresh as a Daisy from their habit of opening up fresh each day.

They are a delightful sign that spring time has arrived, each one is actually over 100 flowers all squashed into that lovely yellow centre. Flowering early means they are hugely important to pollinators which emerge first in spring, such as bees, hover-flies, beetles and moths. Other creatures eat the flowers and if the seed heads are left birds, particularly Greenfinches will eat them. Daisies don't take long to grow, if you collect then scatter the seeds you'll have flowers next year. Other plants take a little longer; some trees are very slow growing. Since the bells at St Germain's were hung in 1887 to mark the Golden Jubilee of Queen Victoria 139 years have passed, a good time span to think of trees, there are a number to admire in Grange Park from the relatively short lived fruit trees that were planted in 2018 as part of the heritage orchard and will likely only last 50 years to the more mature trees first planted when the park was created in 1994 which include Oak, Sycamore, Scots Pine and Acer trees that could still be here 150-200 years from now, why not take a stroll around the park and enjoy them whilst you are still here to.

Celebrating Scothern Play Park 14th March 2026



On Saturday 14th March 2026 the Parish Council officially opened the new Scothern play park. The new equipment, purchased from Outdoor Play UK, was installed at the end of January but could not be opened before due to the inclement weather. The equipment was chosen from feedback given by residents on what they would like to see in a play park

and ensuring that the equipment was accessible for all young people.

The event opened at 10.00a.m. with West Lindsey District Councillor, Baptiste Velan and Parish Council Chair, Jane Johnson cutting the ribbon to the park. This was followed by the equipment being tested out by several young residents of Scothern.

Parish Councillors served refreshments and gathered feedback from the young people and their parents on there views of the equipment:

- The favourite equipment was the roundabout, swings and slides
- Sixteen respondents rated the playpark 10 out of 10, two rated 9, three rated 8 and one rated 6.
- Many parents (12 out of 16) rated the equipment quality and accessibility as excellent.

The Parish Council would like to thank West Lindsey District Council for its generous grant towards the cost of the equipment.



SCOTHERN'S LINKS TO LADY GODIVA



Sitting in my office watching two ladies riding horses through the flooded Craypool Lane reminded me of our links to the famous Lady Godiva.

Lady Godiva, or Godifu in Old English, was the wife of Leofric, the Earl of Mercia, before the Norman Conquest. She is remembered for falling out with her husband over a tax he was going to impose on his people and riding naked through the streets of Coventry.

This is her story and her links with Scothern and Lincolnshire. The old Kingdom of Lindsey had become part of Mercia after the Battle of the Trent in 697 AD. In 995 Godiva was born, possibly at Bucknall near Bardney, where her father had a large manor which her brother Thorold inherited. He was the Sheriff of Lincolnshire. Godiva's marriage to Leofric was her second marriage and, as part of her dowry, she would have brought many manors and lands to the union.

A devout Christian, Godiva means "woman of God", yet in some ways she was a modern woman and wasn't going to stay quiet when she thought her husband was being ungodly. He wanted to impose a tax on horse ownership. She thought this was harsh and argued with Leofric about it. In a fit of anger Leofric said, "If you ride through the streets of Coventry naked, I'll revoke the tax." He thought she would never go through with it, but she was determined. To stop anyone seeing her, he instructed the 2,000 residents to close their shutters and not look out on pain of death.

One man, a tailor called Thomas, could not resist looking out to see Godiva. This is where the name "Peeping Tom" comes from. Unfortunately for Tom, the legend says he was instantly blinded by God, but blinding was a punishment used by the Anglo-Saxon hierarchy, so if Tom existed at all I would guess he was blinded by Leofric. Godiva completed the ride covered only by her long hair and Leofric revoked the tax.

Godiva and her family gave numerous lands and money to various churches and monasteries, including Stow Cathedral. In 1950 Scothern historian Florence Baker spent many weeks reading through medieval scrolls kept in Peterborough Cathedral and found a link to Godiva. She discovered that a lady called Leofgyva had died on pilgrimage to Jerusalem and had left the Manor at Fiskerton, and its lands at Sudbrooke and half of Scothern—from Chapel Walk to the far eastern end towards Stainton—to Peterborough Cathedral. It is thought she was either Godiva's sister or daughter. Godiva was still alive in 1086, according to the Domesday Book, and very unusually was one of the few Saxon female gentry who still owned many lands. What a woman.

Anyone up for celebrating our links to Lady Godiva with a ride around Scothern?

FASHION SHOW

LADIES well known fashion brands!



In association with COMPLETE CLOTHING



**SCOTHERN
VILLAGE HALL**

TICKETS
£8

Inc glass of wine

Monday 27th APRIL
Doors open at 6.45 for 7pm

**TICKETS
ON SALE
NOW!**

Phone: 07787 538803
www.scothernvillagehall.org

or Scan the QR code >>>>





The positive season of spring

There are numerous signs that spring is on the way. The mornings are a little lighter, the birds are merrily singing and those brave little shoots are pushing up through the soil and displaying all their colourful glory. It feels rather fitting that the Christian festival of Lent arrives at this time of year – the season of quiet growth.

Lent can sometimes sound like a heavy word. It might bring to mind giving things up, being more serious than usual, or trying (and perhaps failing!) to stick to good intentions. Many of us will have memories of giving up chocolate, biscuits, or that extra glass of something in the evening. There's nothing wrong with that at all – a small act of self-discipline can be surprisingly powerful.

But perhaps Lent is also an invitation to something gentler. Rather than simply asking, “What shall I give up?”, we might ask, “What might I make space for?” If we give up scrolling for half an hour in the evening, could we make space for a phone call to someone who might be feeling lonely? If we give up a few treats, could we put the savings aside for a local cause or charity? If we give up rushing quite so much, could we make space for a quiet cup of tea and a moment of gratitude?

Across all the seasons we know there are times of busyness – fêtes, harvests, Christmas fairs – and times that are quieter and slower.

Lent is one of those slower seasons. It gives us permission to pause. It is also a time for honesty. None of us are perfect. We lose patience, we forget to say thank you, we hold grudges longer than we mean to. Lent offers a chance to notice these things without harshness. Simply to say, "Perhaps I could try again." There is something deeply hopeful in that.

And of course, Lent leads us towards Easter – towards celebration and new life. The journey through the quieter weeks makes the joy at the end all the brighter. Just as the bare branches will soon be covered in blossom, what feels plain or ordinary now may be preparing for something beautiful.

So, wherever you find yourself this Lent and Easter – full of faith, full of questions, or somewhere in between – perhaps the simplest approach is best. Take a little time. Be a little kinder. Notice the small signs of growth, both in the garden and in your own heart.

Spring is coming. And with it, the gentle reminder that new beginnings are always possible.

WHAT'S ON AT SCOTHERN CHAPEL OVER THE EASTER PERIOD AND DURING APRIL

Sun 29 March 10.30 We are at Nettleham for Palm Sunday led by the Rogalskis

Friday 3 April 10.00 There is a Good Friday Service at Nettleham

Easter Sunday 5 April

6am Communion at the Police Pond at Nettleham

10.30 We are at Nettleham for Communion with Rev Canon Alan Robson, Lincolnshire's Agricultural Chaplin

Sunday 12 April 10.30 We are at Scothern Chapel with Margaret Ford

Sunday 19 April 9.15 We join our friends at the Parish Church in Scothern

Sunday 26 April 10.30 We are at Scothern Chapel with Dr Roy Jackson

Church Services in the Benefice - April 2026

Walk of Witness Good Friday. 3rd April.

12 noon St. Mary's. Welton.

1.30 pm St. Chad's. Dunholme.

2.30 pm. St. Germain's. Scothern.

Come and join us as we walk between the three villages with a short service at each of the Churches. You can do as little or as much of the circuit as you wish.

Easter Sunday 5th April

Dawn Service. St. Chad's. Dunholme.

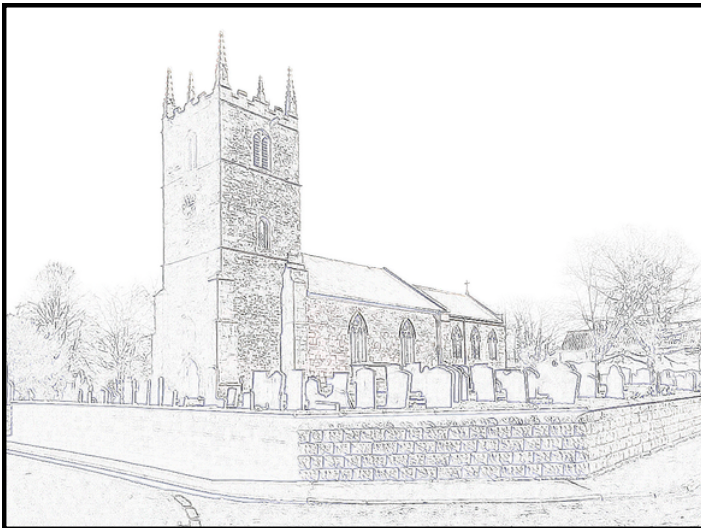
11am Benefice Holy Communion. St. Mary's. Welton.

12th April. 10.30am Holy Communion. St. Chad's. Dunholme.

19th April 9.15am Holy Communion. St. Germain's. Scothern

26th April. 10.30am Benefice Communion. St. Mary's. Welton.

4pm Evening Prayer. St. Germain's Scothern.



Emma
MACKEY

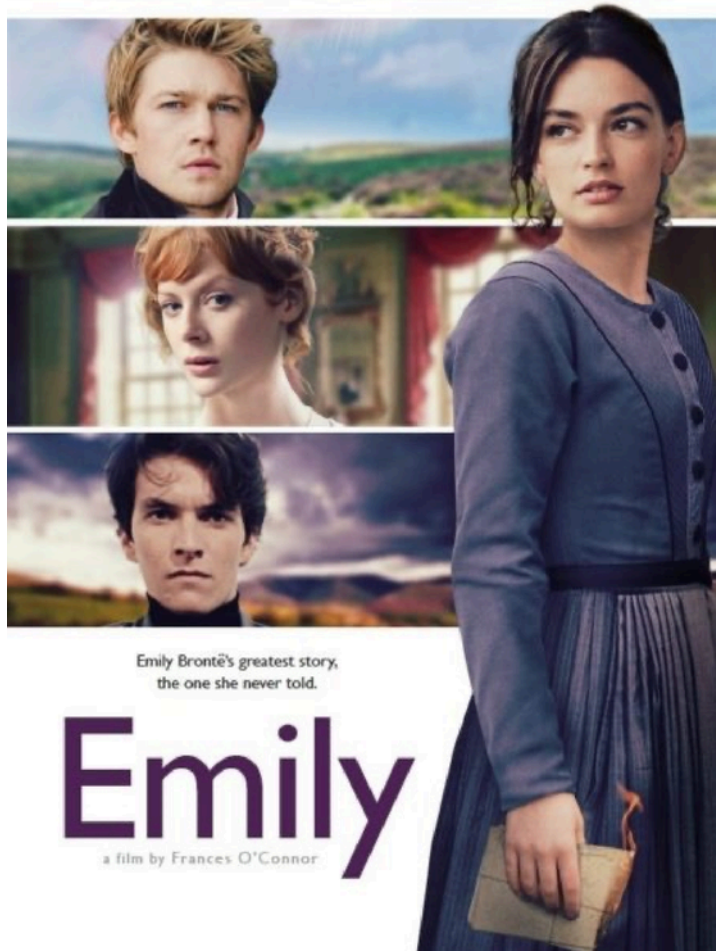
Joe
ALWYN

Fionn
WHITEHEAD

Emily
BEECHAM



FLIX
IN THE
STIX



Brontë Mania hits Scythia!

"Emily" imagines the transformative, exhilarating, and uplifting journey to womanhood of a rebel and a misfit, one of the world's most famous, enigmatic, and provocative writers, who died, too soon, at the age of 30.

Friday 24th APRIL
7 for 7.30pm
Scythia Village Hall

£5
On the
Door

We then take a break for
summer until Autumn

A SCOTHERN GARDENERS NOTES FOR APRIL

Some folk say that it is officially spring when the song thrush sits at the top of the tree and sings it's heart out, (another good reason to plant a tree) and others say it is when the air is filled with the sound of lawn mowers.

Most lawns will have had their first cut by now but don't forget to do the edges as they are the secret behind a good looking lawn, The old-fashioned half moon cutter and a sharp pair of edging shears give a knife edge finish that strimmers cannot compete with and it is well worth the effort. Brown burnt weed killer edges are definitely to be avoided. It is hard to remember that last summer our lawns were baked to a crisp during the drought but they have all bounced back to a lush green now proving that there is no need to water a lawn.

If you cannot bear 'No Mow May' then just mow around any little clumps of Daisies and Clover which will give you a good excuse to lie on the lawn to watch all the bees as they bounce all over the flowers gathering nectar.

Moss is very useful too, rake it out to line hanging baskets or for topping tubs especially bulbs, to make them look more natural. I was glad that I had a very mossy lawn when I tripped and fell headlong as it cushioned a nasty fall. It feels lovely and soft under bare feet too, perfect for children to play on.

There doesn't seem to be much damage this year from the Cockchaffer Beetle. The year I moved into my house there were huge patches of my lawn which had been dug up by crows searching for the tasty larvae. By Autumn, I had filled them all in with spare weedings and lawn edge cuttings and it was back to normal, so don't despair, it is easy to fix. The adult Cockchaffer is an amazing insect. I first saw one when it flew into my kitchen one evening, attracted by the light, it was huge and sounded like a Lancaster Bomber approaching!

Our lawns really are resilient they will bounce back from drought, pests and don't mind a month of neglect so whatever else you do take some time to just enjoy yours!

**Community Coffee
Morning**

Every Tuesday
10am to midday
held in the
Methodist Chapel

All welcome.

**CHAPEL
CHAT & COFFEE**
on Thursday 9th &
23rd April
at 10.30am
Please feel free to
come along.
The session lasts
about ¾ hour.
All are welcome!



**SCOTHERN
SEWCIAL**

10am until 4pm
£10pp

Tickets available at
www.scothernvillagehall.org

January 4th
February 1st
March 1st
April 12th
May 3rd
June 7th

Tea, coffee, cake
provided

Just For Fun

Find these **VEGETABLES** listed in the wordsearch.

Carrot Broccoli Spinach Tomato Potato
Cucumber Lettuce Onion Pepper Garlic Zucchini
Cauliflower Eggplant Kale Celery Asparagus Radish
Cabbage Beetroot Pumpkin

E	A	A	O	T	B	N	A	O	R	R	U	T	G	N	I	U
U	E	X	Z	N	P	F	S	T	A	U	R	S	J	I	W	C
P	S	O	H	A	I	N	P	A	D	S	D	V	W	L	O	A
C	D	C	E	L	B	G	U	M	I	N	K	M	E	O	R	R
U	N	G	D	P	P	A	M	O	S	S	N	U	F	C	E	R
C	C	E	H	G	A	R	P	T	H	E	B	M	N	C	B	O
A	O	G	C	G	T	L	K	O	E	L	P	E	O	O	M	T
U	F	A	A	E	O	I	I	A	I	I	Q	E	C	R	U	M
L	A	B	N	N	O	C	N	N	S	N	P	X	W	B	C	D
I	T	B	I	R	R	L	O	A	O	P	I	O	S	L	U	S
F	G	A	P	E	T	E	F	M	W	O	A	H	T	W	C	E
L	I	C	S	P	E	T	J	J	I	O	R	R	C	A	A	N
O	E	J	U	P	E	T	S	E	E	U	T	T	A	C	T	Z
W	L	E	S	E	B	U	S	O	N	I	O	N	G	G	U	O
E	A	A	T	P	P	C	E	Y	R	E	L	E	C	O	U	Z
R	K	F	A	K	I	E	E	I	A	F	D	U	Y	C	L	S

Find 10 differences.



Easter Word Scramble

Unscramble the following list of shuffled words to meaningful words!

SEERTA

NUBNY

SEGG

ALECTCHOO

RNPGSI

CCHIKS

ODFAISDFL

WELTON PDA

The spring lunch will be held on 10th April and we hope to open the doors by 11.30am. Several of our regular diners have had to cancel this time due to illness and hospital appointments. This means that , at the time of writing, on the 11th of March, I have 8 spare tickets priced £8 each. If anyone would like to join us for beef pie, carrots, peas and mash followed by apple crumble and custard or trifle, tea or coffee and chocolate. Please call the number below asap if you are interested.

There will be the usual cake stall (any cake donations gratefully accepted and we can collect!) There will also be a raffle, greetings cards for sale and a free quiz to keep you entertained until lunch is served.

As of the 1st April the new self-service booking option will be available for any patient wishing to book PDA transport for medical appointments (OTHER THAN TRANSPORT TO THE HEALTH CENTRE). This will be accessed by logging in to www.weltonsurgery.co.uk and can be done on a computer, lpad or most modern phones. On the Health Centre home page you will find a link with the PDA logo, title BOOK PDA TRANSPORT. Clicking this link will take you to our Terms and Conditions and then on to the booking form. Once completed, with the details of your appointment, press the submit button at the bottom and this will be sent to the coordinator on a secure webpage. The coordinator will allocate the job to a driver and inform the patient, by phone, of driver and pick up time. This will mean you won't have to wait in a queue on the phone to the Health Centre and it will free up their phone lines

If anyone is unsure how to use this service, please ask and we will endeavour to demonstrate it! The form can be completed in the patients name by a family member if necessary.

We will be having 2 tables at the Welton May Fair on Welton Village Green on 4th May. We will be selling both flower and vegetable plants and shrubs(in fact anything donated!) so please come along and support us. As in previous years, if anyone has any plants they could offer us either from your garden or maybe you could grow a few extra to donate to the PDA please get in touch? We can arrange collection prior to the day.

As I mentioned in the February news, from the 1st April, the cost per mile for transport to medical appointments will be 45p. The cost for transport to the Health Centre will remain the same as it currently is.

Dates for our events in 2026 are:

Spring lunch 10th April

Plant Sale May 4th

Autumn Fayre 17th October

Christmas lunch 11th December

Any further information on any of the above don't hesitate to give me a call (862570) Janet Goddard

PLEASE DO NOT USE THIS NUMBER TO BOOK TRANSPORT

Threshold

Threshold is a family church which has been serving the Lincoln villages for over 30 years.

We all get together most weeks at Welton Village Hall.

Everyone welcome!

Check out our website : www.thresholdchurch.co.uk

Friday 3rd April

Good Friday Gathering

Sunday 5th April

Easter Sunday Gathering

Sunday 12th April

Community Cafe

Sunday 19th April

Church Gathering

Sunday 26th April

Church Gathering

Sunday 3rd May

Church Gathering

Sunday 10th May

Community Cafe

Sunday 17th May

Church Gathering

Sunday 24th May

Pentecost Gathering

**All 10am to noon in
Welton Village Hall**

“April in Paris, chestnuts in blossom, Holiday tables under the trees”

(composed by Vernon Duke in 1932 and made famous by Count Basie in 1955) makes us dream of relaxing outdoors maybe - possibly - perhaps in the SUNSHINE! No “maybes” where Lindsey u3a is concerned. We can’t promise the sunshine but we do have a full programme of monthly speakers and group events such as the following in APRIL

16th: ‘Quiz with a Difference’ at Welton Village Hall at 2pm.

21st: ‘Visits’ group to Doddington Hall - The McTsen uniform collection

24th: ‘Architecture’ & ‘Visits’ coach trip to Beverley

28th: ‘Garden’ group visit to Bolham Manor, Retford

In case you didn’t know, Lindsey u3a is a local, friendly, informative, low cost organisation open to those of retirement age not in full time employment. We meet at Welton Village Hall usually on the first Thursday of the month so our next meeting will be on 2nd April. You are invited with no obligation to one of our meetings. Doors open at 9.30am for tea/coffee and an opportunity to chat to interest group leaders in the Welton Room followed by a speaker in the hall at 10.30am. If you decide to come along for a look, tell someone on reception you are new and one of our friendly greeters will show you round and answer any questions.

On 2nd April an inspirational speaker, Emma Sheardown, will give a talk entitled “There’s no such word as CAN’T”. She was born with cerebral palsy and against all odds has achieved so much in her life. Prepare to be amazed by what this lady has accomplished.

On 21st May Malcolm Ross will tell us about William Marwood from Horncastle who was appointed by the Government as the State Executioner in 1829 and invented the "Long Drop" hanging method.

We aim to have a variety of speakers over the course of the year so there is something for everyone. u3a members can also join various online talks, workshops and courses. You can find out more from www.u3a.org.uk.

If you can't come to one of our general meetings you could join us at the 'Gardeners' Retreat' tearoom at Scothern Nurseries for a cuppa and a chat at 10.15am on the fourth Thursday of the month. The next one is on 23rd April. Whether you're a newcomer wanting to know more about Lindsey u3a or already a member who just fancies a cuppa, maybe a scone and a chat, do come along. Everyone is welcome.

Everything you need to know about us can be found on our website, lindseyu3a.org.uk, where you will find a comprehensive list of our interest groups, where and when they meet plus news about visits of local interest or theatre visits, lunches and holidays arranged by members for members.

If you require any further information please contact Luke Pickering

Email: lukep@lahestates.co.uk Mob: 07774 251197

Best wishes

Sheila Nash

www.lindseyu3a.org.uk



Lincolnshire Mobile Library Service

If you or someone you know is unable to visit the library due to mobility, age or health related issues then our free and friendly Access Service can arrange for books to be delivered straight to your door.



January 2026 – December 2026

Friday Route 3 (Mobile Library North)

January	February	March	April	May	June
9 th	6 th	6 th	*	1st & 29 th	26 th
July	August	September	October	November	December
24 th	21 st	18 th	16 th	13 th	11 th

For more information, please contact the Lincolnshire Mobile Library service on 07483017085 or graham.owen@gll.org

Scothern Village Hall 9.45 - 10.30am

Every effort is made to ensure the mobile library arrives at each stop on time. To access your Library account visit:

better.org.uk/library/lincolnshire

Your reservation pick-up branch is: Mobile Library North

For the latest news on this route, enquiries or renewals, please contact the Customer Service Centre On

01522 782010

or graham.owen@gll.org

Welton Village Library and Community Hub

Based at Manor Park, Hackthorn Road Welton LN2 3PA

Monday 12noon to 5pm*, Tuesday 9:30am to 2:30pm

Wednesday & Saturday 10am to 12 noon

* Closed for Easter Saturday 4th and Monday 6th April

April brings the hope of warmer weather interspersed with showers, hopefully most of those will just be from the sound of the colourful rain shakers we are inviting local children aged between 4 and 11 to come along and make. Saturday 18th April is the day at 10:30am for this free event with all materials supplied, all we ask is that children are accompanied by a responsible adult.

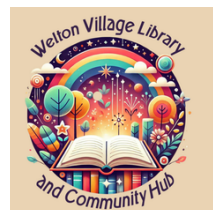
For pre school children and their parents or other carers we continue with our weekly Storytime for around half an hour every Tuesday at 9:30am which are certain to raise a sunny smile from those attending.

An afternoon that promises much brightness is Tuesday 21st April when our multi- talented volunteer Avril Golding will be giving an illustrated talk entitled 'Abstract to Wabi Sabi with a Sprinkling of Haiku'. Avril has won numerous awards for her photography, indeed many of her photographic images and art work have been sold. Her talk will reflect her interest in nature, history, art and the quirky with some images the product of her imagination. Everyone is welcome to come along at 2pm for this free talk with a retiring collection for library and hub funds.

Last, but by no means least, do remember as well as the books on our shelves you can order your favourite and many newly issued books from the entire Lincolnshire libraries group. Just ask one of our friendly volunteers!

Mike - Library volunteer

Facebook page @Weltonvillagelibrary



Scothern Recreation Centre

Annual General Meeting

Monday May 11th @ 7.45pm

followed by committee meeting.



PAINTER/ DECORATOR

Internal & External Work

- General Repairs
- Painting & Decorating
- Wallpaper Removal
- Woodwork Painting
- Coving and Cornices
- Minor Plaster Repairs

Free Quotes – No Job Too Small

JOHN CROOKES **07593 309610**



BEE SWARMS

**DO YOU NEED A SWARM OF BEES
REMOVING FROM YOUR PROPERTY?**

CALL LOCAL BEEKEEPER

BRIAN CLARKE

FOR QUICK COLLECTION



Tel: 07748 657304
brianclarke55@icloud.com



Dunholme Camera Club

April already and hopefully the cold winds, Rain and dull days will subside so that we can get out with our cameras and capture the beauty of our local surroundings and record for years to come the sights and events around us. Spring always brings us fresh life which when seen in a photograph always lifts us up after a long cold winter so hopefully we will be able to get and take some stunning photographs ready for any competitions that come up through the year.

This year is our 30th Anniversary year since I started the club and since the early days when we had around a dozen members we are now a strong healthy club of over 50 members, one of the largest in Lincolnshire, camera clubs throughout the county took a big hit over the Covid period but thankfully we quickly recovered and have got back up to full strength. If you are interested in photography then do come along to our meetings, what we are doing over the year every fortnight is on the home page of our website www.dunholmecameraclub.co.uk if you want to get in touch just go to the contact page and send a message.

Right what are we doing in April? On the 9th we have Gavin Smith who will be giving us a talk on "Aviation Photography" On the 23rd April we will have our 3rd competition of the year which will be a "Minimalistic" competition judged by John Whaler. Finally on the 30th Brian McCarthy will be presenting a "Practical" evening so members will need to bring their cameras on the night to take part. Well that's it for another month, watch out for what will be happening in May.

Grahame Dunkin 07501 259001 email dunholmecc@gmail.com

Computer Problems? James.tcm (the computer man)

I can help with home computer issues ranging from emails & printers to internet connections, viruses & upgrades etc.

If you need a new PC I can help you choose, help set your new PC up and transfer everything over from your old one.

Local & Independent - I'll come to you!

Text or Email preferred or call James on

07568 174 474

james.tcm@outlook.com

CASH PAID FOR

Broken & Unwanted Jewellery
Gold, Silver, Old Coins, Sovereigns
Silverware & Other Antiques

Text, Email or Call: **07512 058 557**

oldhallantiques@gmail.com

 **CLEARVIEW**
OPTICIANS

- Private and NHS eye tests
- Contact lens trials and aftercare
- Happy to assess children from 6 months old
- Free parking

Annabelle Magee

Bsc(Hons) McOptom, Prof Cert Paediatric Eye Care, Prof Cert Low Vision, PgCert Clinical Optometry, Prof Cert Glaucoma

169 Burton Road, LN1 3 LW

&

6A Eastgate, LN2 1QA

Telephone: 01522 542121

www.clearviewopticians.co.uk

Email: enquiries@clearviewopticians.co.uk



Phil Presswood
Specialist Cars Ltd
www.ppscltd.co.uk
Tel: 01652 655555

CAR SALES

SPORTS, FAMILY, 4X4, SUV. PART EXCHANGES WELCOME

Car Sales business opening in Langworth at Fosters Yard on 5th January 2026

Established in 2017 Phil Presswood Specialist Cars Ltd has been operating in Brigg in Lincolnshire, until now!

Owned by local Sothern Businessman Phil Presswood this new venture near to his home village opens new possibilities for the business.

A well-established 5-star business specialising in low owner, low mileage cars with a full-service history that is keen to serve the local Lincolnshire community

Visit www.ppscltd.co.uk for more details.

Parish Council News

Wed, 4th March Parish Council meeting - 4 councillors present with LCC Cllr Jane Smith and a resident for part of the meeting.

- A resident spoke on the recent & historical flooding on Craypool Lane and the questions regarding the dykes.
- Cllr J Smith reported that Highways & AW plan joint works to install a soak-away on Craypool Lane but no date as yet.
- War Memorial refurbishment - delayed due to the wet weather this winter, scheduled for April 2026
- Residents emails received regarding - the condition of the roads through the village; environmental weight restriction on the roads; a CPR first aid session; muddy PrOW & wobbly gate post; litter picking.
- Surface dressing works planned this year on Juniper Drive, The Alders & Church St
- The next Parish Council Meeting will be held on Wed 1st April at 8pm, following the APM in the Methodist Chapel.
- Each meeting has a 10-minute public forum, during which members of the public may make a short statement to the Council in relation to matters on the agenda, matters of concern or interest. If members of the public have any matters that they wish to be discussed, they should submit them to the Clerk one week in advance of the meeting.
- The Agendas and Minutes of meetings are posted on the Parish Council Notice Board outside the Village Hall and on our website: <https://scothern.parish.lincolnshire.gov.uk/>

Scothern Parish Council Councillors:

Jackie Atkins

Derek Canton

Robert Creaser

Jane Johnson -Chair

Barnaby Patchett -Vice

Mark Unwin

Sian Watt Jones

Scothern Bus Timetable

The No.43 timetable is below. From the 5th January 2026 this was slightly revised to improve timekeeping & reliability.

Journeys from Scothern to Nettleham can be made by booking the CallConnect service:

Ring 0345 234 3344 or download the Callconnect App

Your local bus service into Lincoln city centre

- Market Rasen Market Place
- Linwood
- Liasington White Hart
- Wickenby Church
- Snelland Telephone Box
- Stanton by Landworth Scothern Ln
- Langworth Scothern Lane
- Scothern St Germans Church
- Sudbrooke Elm Drive Shops
- Lincoln Carlton Boulevard
- Lincoln County Hospital
- Lincoln Central Bus Station

- Lincoln Central Bus Station stand M
- Lincoln County Hospital
- Lincoln Carlton Boulevard
- Sudbrooke Elm Drive Shops
- Scothern St Germans Church
- Langworth Scothern Lane
- Stanton by Landworth Scothern Ln
- Snelland Telephone Box
- Wickenby Church
- Liasington White Hart
- Linwood
- Market Rasen Market Place



pay with contactless

for information & updates

pccoaches.co.uk

@pccoaches

P.C.Coaches of Lincoln

or to get in touch

01522 533605 our Lincoln office

enquiries@pccoaches.co.uk

P.C.Coaches of Lincoln
17-19 Crofton Road,
Lincoln LN3 4NL

Mondays to Fridays (excluding public holidays)

0700	0915	1510			
0705	0920	1515			
0709	0924	1519			
0712	0927	1522			
0716	0931	1526			
0718	0933	1528			
0720	0935	1530			
0725	0940	1145	1245	1540	
0729	0944	1049	1149	1249	1544
0745	0955	1100	1200	1300	1555
0750	0959	1104	1204	1304	1559
0800	1007	1112	1212	1312	1607

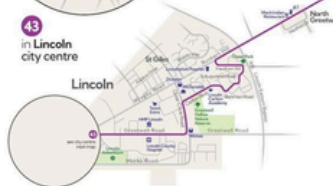
runs in school holidays only

0810	1015	1115	1215	1415	1740
0818	1023	1123	1223	1423	1748
0822	1027	1127	1227	1427	1752
0832	1037	1137	1237	1437	1802
0837	1042	1142	1242	1442	1807
0842				1447	1812
0845				1450	1815
0849				1454	1819
0853				1458	1823
0856				1501	1826
0900				1505	1830
0905				1510	1835

runs in school holidays only

43

Market Rasen
Scothern
Sudbrooke
Lincoln



Heading uphill in Lincoln? Walk & Ride!

Running up to every 20 miles between uphill and downhill Lincoln our Walk & Ride service is ideal for admiring the world famous Cathedral on a visit to the Castle where you can see one of the original copies of the Magna Carta.

check out the bus route on the map or ask your driver for a leaflet

P.C. Coaches of Lincoln
www.pccoaches.co.uk

We do coach here and fabulous holidays too
find more information online





Fix My Street - Report, view, or discuss local problems

- potholes, highways, broken paving slabs, footpaths, street lighting, tree blocking the highway, flooding

Enter a Lincolnshire postcode, street name and area, or check an existing report number:
use QR code or <https://fixmystreet.lincolnshire.gov.uk/>



Report it - Use our online forms to report an issue or tell us about a change. It's the quickest and cheapest way to contact us. No waiting and your report will go straight to the correct service area whatever time of day you report it.

- Bins – collection day/missed, waste, fly tipping, abandoned vehicles, dog waste bins, litter, ASB, street cleaning, street name plate damage.

Use QR code or <https://www.west-lindsey.gov.uk/report-it>

Notification of Temporary Traffic Regulation Orders:

Ref: TTRO/TTR015576 -Water main repairs, AW

Road closure Order - Church Street (Between Sudbrooke Road & a point 40m West) Period of restriction: 20/04/2026 - 22/04/2026

If you have any queries, or require further information on any of these, please contact the LCC Customer Service Centre on 01522 782070.

www.lincolnshire.gov.uk/roadworks

Local Contacts:

Scothern Parish Council: scothern.parish.lincolnshire.gov.uk

Clerk/RFO - Lisa Brooks-Sleight

clerk@scothern-pc.gov.uk 07549 137538

County Councillor: Jane Smith 01522 552222

cllrj.smith@lincolnshire.gov.uk

District Councillor: Baptiste Velan 07551 722022

cllr.b.velan@west-lindsey.gov.uk

West Lindsey District Council: 01427 676676

Lincoln County Council: 01522 552222

Scothern Recreation Centre Village Hall: www.scothernvillagehall.org

Bookings: 16 Weir Farm Paddock - scothernvh@hotmail.co.uk

St Germain's Church: pcc.stgermain@gmail.com

Parish Office - for funerals, weddings and baptisms

07468 149695, lawreslmp@gmail.com

Vicar - Revd. Lynne Hawkins 01673 565022

Churchwarden & illness/hospital visits - Jean Drewery

01522 752489 m.drewery48@btinternet.com

Methodist Chapel: www.lincolnmethodist.org.uk

Minister Revd. Richard Mottershead

07771 624885, rpm2000.sp@gmail.com

Scothern Cricket Club: Jacob Smith, 07826 060091

Ellison Boulters After School Club: 07736 575155

25th Lincoln Scout Group (Scothern): Nick Cornwell-Smith

07824 995070 nick.cornwell-smith@lincolnscouts.org.uk

Scothern Players: Lynne Ballantine - donorfairy@aol.com

To advertise in the Scothern News, email: scothern.news@gmail.com

Local Scothern notices/events/voluntary groups - free of charge.

Monthly cost to place an advert:

1/4 page - £8,

1/2 page -£12,

Full page -£18

Invoices will be sent from Scothern Parish Council

Useful Information

Witham u3a - 3rd Thursday of each month

Reepham and Cherry Willingham Village Hall

Contact - Gerry Wiswould 01673 866718

Lindsey u3a -1st Thursday of each month

Welton Village Hall

Member Secretary - Tricia Barnes 07855 178612

Scothern Recreation Centre

Committee meetings 1st Monday of each month 7:45pm

Beevers, Cubs, Scouts Tuesdays 5-9pm

Scothern Players Thursdays 7pm all evening

Flix in Stix - Friday - dates on a poster.

Scothern Village Hall Secretary - Gill Radley

scothernvh@hotmail.co.uk

POST OFFICES

Sudbrooke Village Store, 1/2 Holme Drive, Sudbrooke 01522 751438

Nettleham Co-Op, The Green, Nettleham

Welton Co-op and The Carlton Centre Co-op

PHARMACY

Lincoln Co-op, Church Street, Nettleham 01522 751702

HOSPITAL

Lincoln County Hospital, Greetwell Road, Lincoln 01522 512512

DOCTORS

Nettleham Medical Practice, Lodge Lane. 01522 751717

www.nettlehammedical.co.uk

Welton Health Centre, 4 Cliff Road, LN2 3JH. 01673 862232

www.weltonsurgery.co.uk

POLICE

Emergencies - 999 Non-emergencies 101

www.lincs.police.uk/contact/af/contact-us-beta/contact-us/

Linwood Road, Market Rasen, LN8 3QE

Open 9am - 5pm Monday to Friday

BUSES

P C Coaches 01522 533605 CallConnect 03452 343344

Lincoln Bus Station 01522 873655

Bus timetables are posted on the village notice boards by the Village Hall, opposite St Germain's Church and at the bus stops on Dunholme Road and Nettleham Road.

PC Coaches 43 to Lincoln City Centre and return

CallConnect -On demand service call 0345 234 3344 or

<https://lincsbuses.info/callconnectapp>

NEWSAGENTS

Beckside Newsagents, Nettleham 01522 751331

Nettleham Convenience Stores, Lodge Lane 01522 753345

SCHOOLS

Ellison Boulton CofE Academy,

Sudbrooke Road, Scothern 01673 862392

William Farr CofE Comprehensive School,

Lincoln Road, Welton 01673 866900

SHOPPING

Sudbrooke Village Store, 1/2 Holme Drive, Sudbrooke

Lincoln Co-op, The Green, Nettleham

Lincoln Co-op, Market Rasen Road, Dunholme

**Graham Hill
Qualified Painter and Decorator
Interior and Exterior**



**1 Bridge View
West Rasen
Market Rasen
LN5 3LS**

Mobile: 07857 626706

*Scotthern Nurseries
Plant Centre*

WWW.SCOTTHORN-NURSERIES.CO.UK
DUNHOLME ROAD, SCOTTHORN,
LINCOLN, LN2 2UD
01673 862297



**SEASONAL RANGE OF
INDOOR & OUTDOOR
PLANTS**

**GIFTWARE, CARDS
& VOUCHERS**

**OVER 50 YEARS OF
GROWING EXPERIENCE**

**KNOWLEDGEABLE
& FRIENDLY STAFF**



Gardeners Retreat
Tea room



Answers to page 14 & 15

E A A O T B N A O R R U T G N I U
 U E X Z N P F S T A U R S J I W C
 P S O H A I N P A D S D V W L O A
 C D C E L B G U M I N K M E O R R
 U N G D P P A M O S S N U F C E R
 C C E H G A R P T H E B M N C B O
 A O G C G T L K O E L P E O O M T
 U F A A E O I I A I I Q E C R U M
 L A B N N O C N N S N P X W B C D
 I T B I R R L O A O P I O S L U S
 F G A P E T E F M W O A H T W C E
 L I C S P E T J J I O R R C A A N
 O E J U P E T S E E U T T A C T Z
 W L E S E B U S O N I O N G G U O
 E A A T P P C E Y R E L E C O U Z
 R K F A K I E I A F D U Y C L S



SEERTA **E A S T E R**
 NUBNY **B U N N Y**
 SEGG **E G G S**
 ALECTCHOO **C H O C O L A T E**
 RNP GSI **S P R I N G**
 CCHIKS **C H I C K S**
 ODF AISDFL **D A F F O D I L S**



HERITAGE

www.heritagejoinerysolutions.co.uk

Quality Craftsmanship | Reliable Service | Traditional Skills

HERITAGE JOINERY SOLUTIONS

From bespoke interior work to outdoor timber projects, **Heritage Joinery Solutions** provides professional joinery and property maintenance with attention to detail and pride in every job.

Our Services

- ✓ Kitchen Fitting
- ✓ Home Storage Solutions & Bespoke Cabinets
- ✓ Doors, Locks & Ironmongery
- ✓ Wooden Flooring Installation
- ✓ Skirting & Architrave
- ✓ Fencing & Outdoor Timber Work
- ✓ General Property Joinery
- ✓ Property Maintenance & Repairs
- ✓ Fencing & Outdoor Timber Work
- ✓ General Property Joinery
- ✓ Property Maintenance & Repairs

Contact Today

07812 136064

www.heritagejoinerysolutions.co.uk

No job too small – all joinery and maintenance work considered.

Heritage Joinery Solutions
Craftsmanship You Can Trust

Diary of Events in April:

- 1 - Annual Parish Meeting 7.30p.m. Methodist Chapel
 - 2 - Lindsey u3a Welton village hall 9.30am
-

- 6 - Bottle Glass Quiz night, 8pm
 - 7 - Community Coffee morning, Methodist Chapel 10-12pm
 - 9 - Methodist Chapel, Chat & Coffee 10.30am
 - 9 - Dunholme Camera Club
 - 10 - Welton PDA Spring Lunch
-

- 12 - Scothern Sewcial village hall 10-4pm
 - 13- Bottle Glass Quiz night, 8pm
 - 14 - Community Coffee morning, Methodist Chapel 10-12pm
 - 14 - SRC meeting at the village hall 7.45pm
 - 16- Witham u3a Reepham and Cherry Willingham Village Hall
-

- 20 - Bottle Glass Quiz night, 8pm
 - 21- Community Coffee morning, Methodist Chapel 10-12pm
 - 23 - Methodist Chapel, Chat & Coffee 10.30am
 - 23 - Dunholme Camera Club
 - 24 - Flix in the Stix- Emily, 7 for 7.30pm
-

- 27- Bottle Glass Quiz night, 8pm
 - 27 - Fashion Show, Scothern Village Hall 6.45 for 7.00 p.m.
 - 28 - Community Coffee morning, Methodist Chapel 10-12pm
-

Send us your May events for next months issue

Scothern News is produced by Scothern Parish Council

Deadline for articles & events for the May issue is

14th April 2026 - scothern.news@gmail.com



Play Park Opening 14th March 2026

